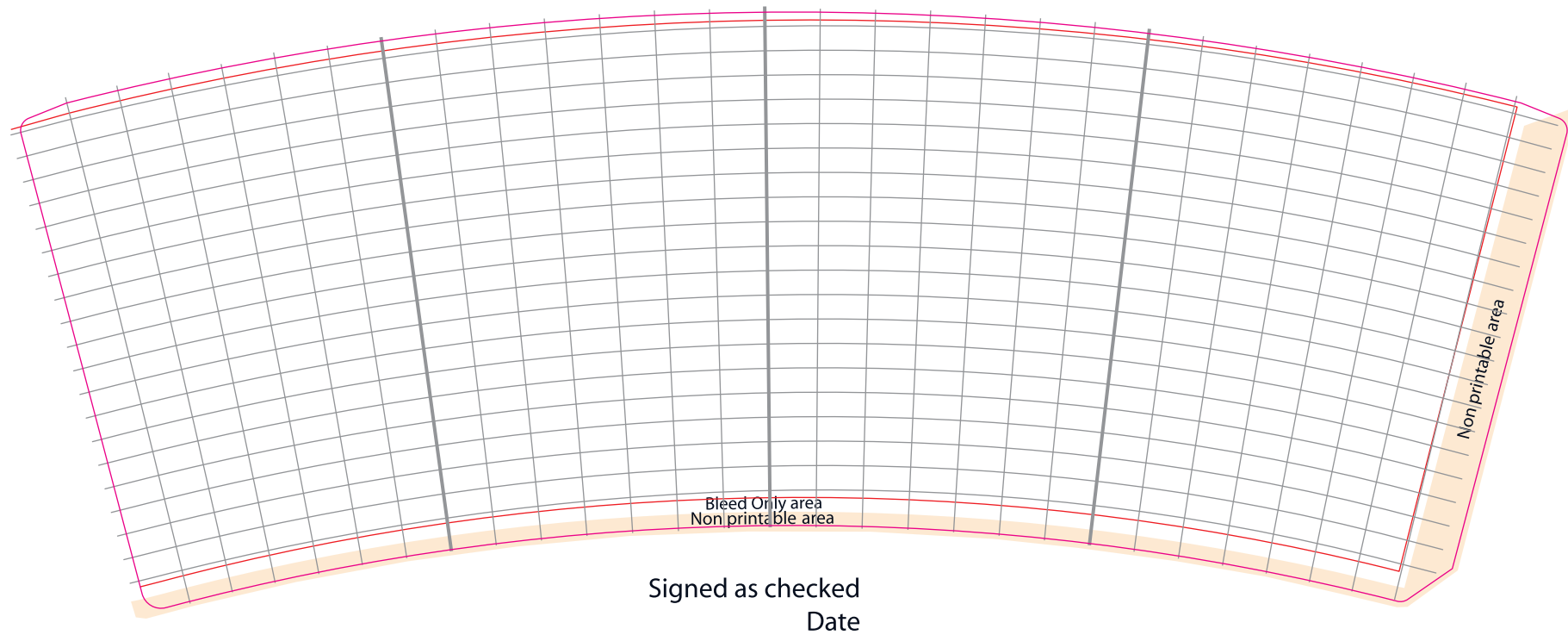


Rotate repeat jobs 0.75 clockwise & align to black line on Non Print Layer, on far right.

Make sure elements match the grid.

Make sure bleed is correct.



NOTE: Artwork in between the red lines will be visible. Please add 3mm bleed to all sides beyond the keyline. Only layers of "Keyline" and "Artwork" should be written within your pdf for print.

ACHTUNG: Becherdesign wird innerhalb des roten Bereiches sichtbar sein. Bitte 3mm Beschnitt zu allen Seiten über die Keyline hinaus anlegen.
Ausschließlich "Artwork" und "Keyline" im Druck-pdf schreiben; alle anderen Ebenen vorher ausblenden.

Version 05/2016