

Product design / artwork for approval

A surcharge of € 25 per additional proof following 2nd print proof will be added to your invoice.

Order no.: Proof XXXXXX

Date: 16/01 2024

Product: Plaster envelope

Envelope size: 100 x 65 mm

Front print colours: CMYK

Back print colours: Black

Inner side text languages: GB, DK, SE, NO, FI, DE, PL, FR, ES, IT, NL, PT

Product: Printed Plasters 5 pcs.

Plaster size: 72 x 19 mm

Print colours: CMYK

Important information

Pay attention to:

- ☐ Placement of print;
- ☐ Size of print and repetitions;
- ☐ Proofreading (letters and numbers);
- ☐ Printing colours.

Please check carefully, as we are not liable for any errors or failures after your approval. IMPORTANT! Due to the two different printing surfaces on the plaster and the envelope there can be a slight color difference on the two surfaces. Note that we are printing in 4 color CMYK which cannot match Pantone colors 100 %. Please Note that we always make the effort to meet your color specifications to the best of our ability.

Plasters are printed as a roll - edge to edge. Please note that there may be a tolerance of print colour overlap - up to +/- 1 mm within the cut lines.

Any changes made to the originally delivered design ie. number of colours, repetitions, placement etc., is subject for additional costs. This could mean that your confirmed price is no longer valid, so please check with your contact before making any changes.

NOTE! Approval ONLY per E-mail.

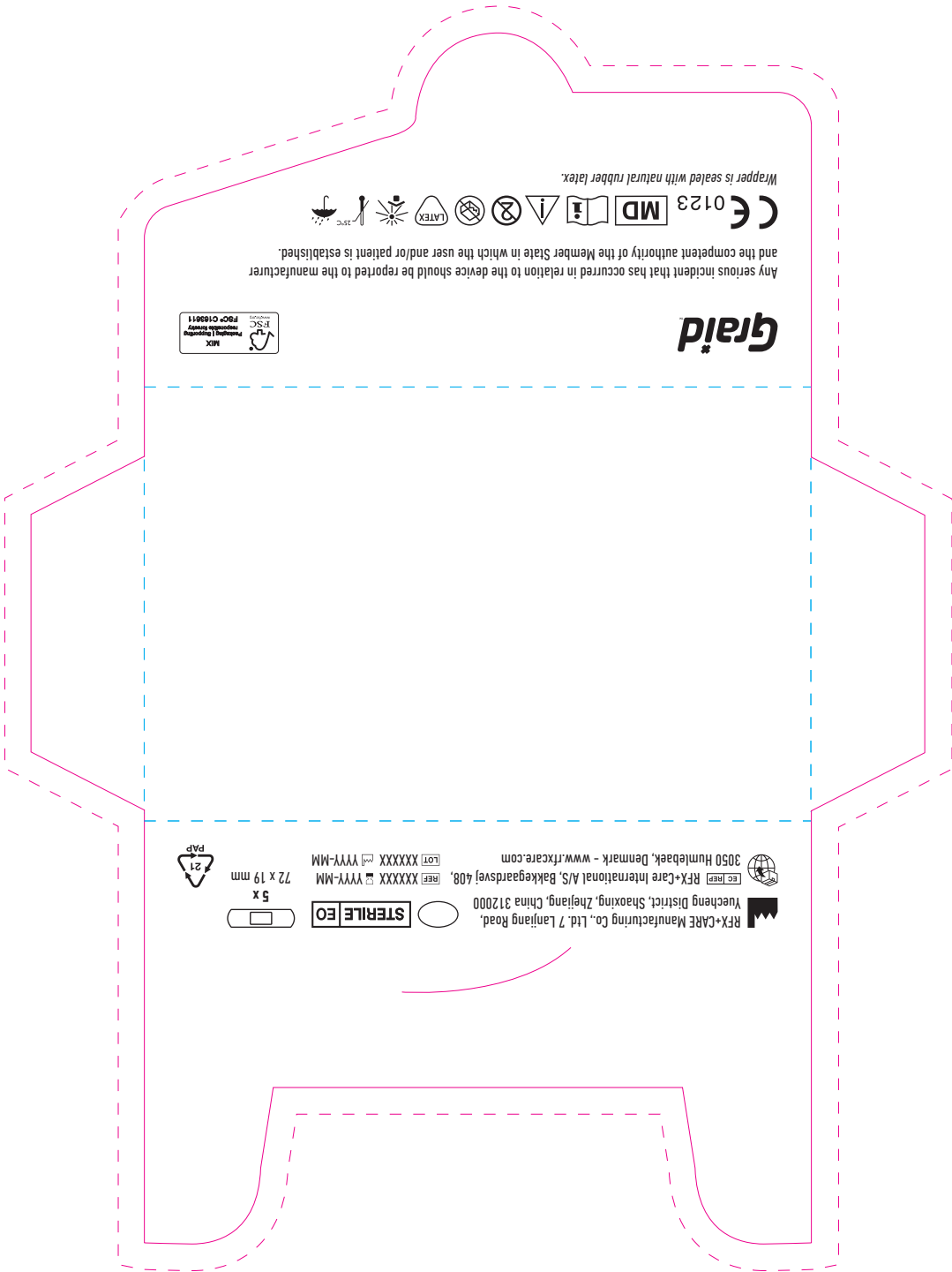
Copyright ©

Copyright 2011 RFX+Care International A/S (Oppenheim & Jansson A/S). All rights reserved. MyKit™ patent certificate for design worldwide. Certificate no. China ZL 2012 3 0033046.5, WIPO countries DM079-023, Korea 30-0674846, Australia 342452, EU 001906207-001, USA, Israel u.reg.

RFX-CARE Manufacturing Co., Ltd.
7 Lanjiang Road, Yuecheng District,
Shaoxing, Zhejiang, China 312000
RFX-Care International A/S
Bakkegaardsvvej 408,
3050 Humlebaek, Denmark



Front

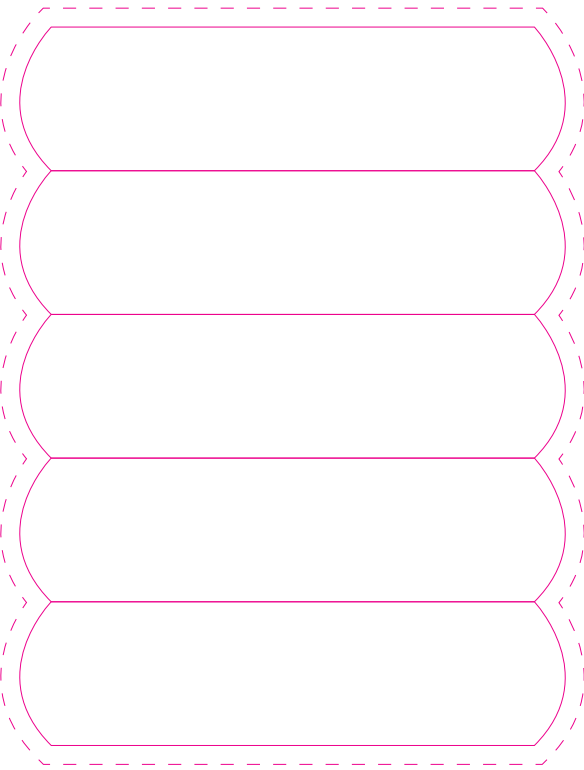


Back/Inner side

IFU (instruction for use) with legal info.



Plaster sheet



Useful to know:

Plasters are printed as a roll - edge to edge!

Please note that there may be a tolerance of print colour overlap - up to +/- 1 mm within the cut lines.

Cutline →

Cutline →

